



**ALASKA DIVISION OF HOMELAND SECURITY &  
EMERGENCY MANAGEMENT**



**SITUATION REPORT 21-361 • DECEMBER 28, 2021**

Toll-Free 1.800.478.2337

Anchorage Area 907.428.7000

SEOC 907.428.7100

<p><b><u>SEOC Preparedness Level</u></b> Level 1 – Normal Operations</p>	<p><a href="http://ready.alaska.gov">http://ready.alaska.gov</a></p>	<p><b><u>National Terrorism Advisory System:</u></b> <a href="#">Read the updated NTAS Bulletin here</a></p>
<p><b><u>Maritime Security (MARSEC)</u></b> Level:1-Minimum Appropriate Security Measures</p>	<p><b>WHO Novel Coronavirus Pandemic (COVID-19):</b>  <a href="#">2019 Novel Coronavirus</a></p>	<p><b><u>Alaska Military Installation Force Protection Level:</u></b> FPCON Bravo</p>

(Significant changes from previous situation reports are in red.)

**Significant Issues:**

The SEOC continues to be actively engaged with communities across the interior region to assist in response and recovery efforts from the recent and continuous snow and ice storms impacting the region.

**Threat Level Changes:**

None

**State of Alaska Department of Health and Social Services (DHSS)**

DHSS is now leading the State of Alaska COVID-19 Recovery through Department Operations, supported by SEOC and other state departments as required.

For current COVID-19 information, see:

<https://covid19.alaska.gov/>

<https://www.cdc.gov/coronavirus/2019-ncov/index.html>

**NTAS BULLETIN**

To read current or expired advisories, click the link below:

<https://www.dhs.gov/national-terrorism-advisory-system>

**Travel Alerts and Conditions**

Closure on the Elliot Highway from MP 72 to MP150 in both directions due to recent icy weather conditions.

For current driving conditions dial 511 or link to <http://511.alaska.gov/>

**Barry Arm Landslide / Tsunami Risk**

For the latest information on the Barry Arm Landslide and Tsunami risk, click here:

[DGGs Barry Arm Landslide and Tsunami Hazard](#)

## Recent Earthquakes

USGS Earthquake Information: <http://earthquake.usgs.gov/>

National Tsunami Warning Center: <http://tsunami.gov/>

## Alaska Volcanoes

**Davidof** Alert Level: **Advisory** and Aviation Color Code: **Yellow**

**Great Sitkin** Alert Level: **Watch** and Aviation Color Code: **Orange**

**Pavlof** Alert Level: **Watch** and Aviation Color Code: **Orange**

**Semisopchnoi** Alert Level: **Watch** and Aviation Color Code: **Orange**

For Alaska Volcano updates, go to: <https://www.avo.alaska.edu/>

## Air Quality Index (AQI) Advisories

For the most up to date Air Quality Index Advisories:

<http://dec.alaska.gov/Applications/Air/airtoolsweb/Home/Index>

## Spills of Oil and Hazardous Substances

The ADEC Spill Prevention and Response page is located at:

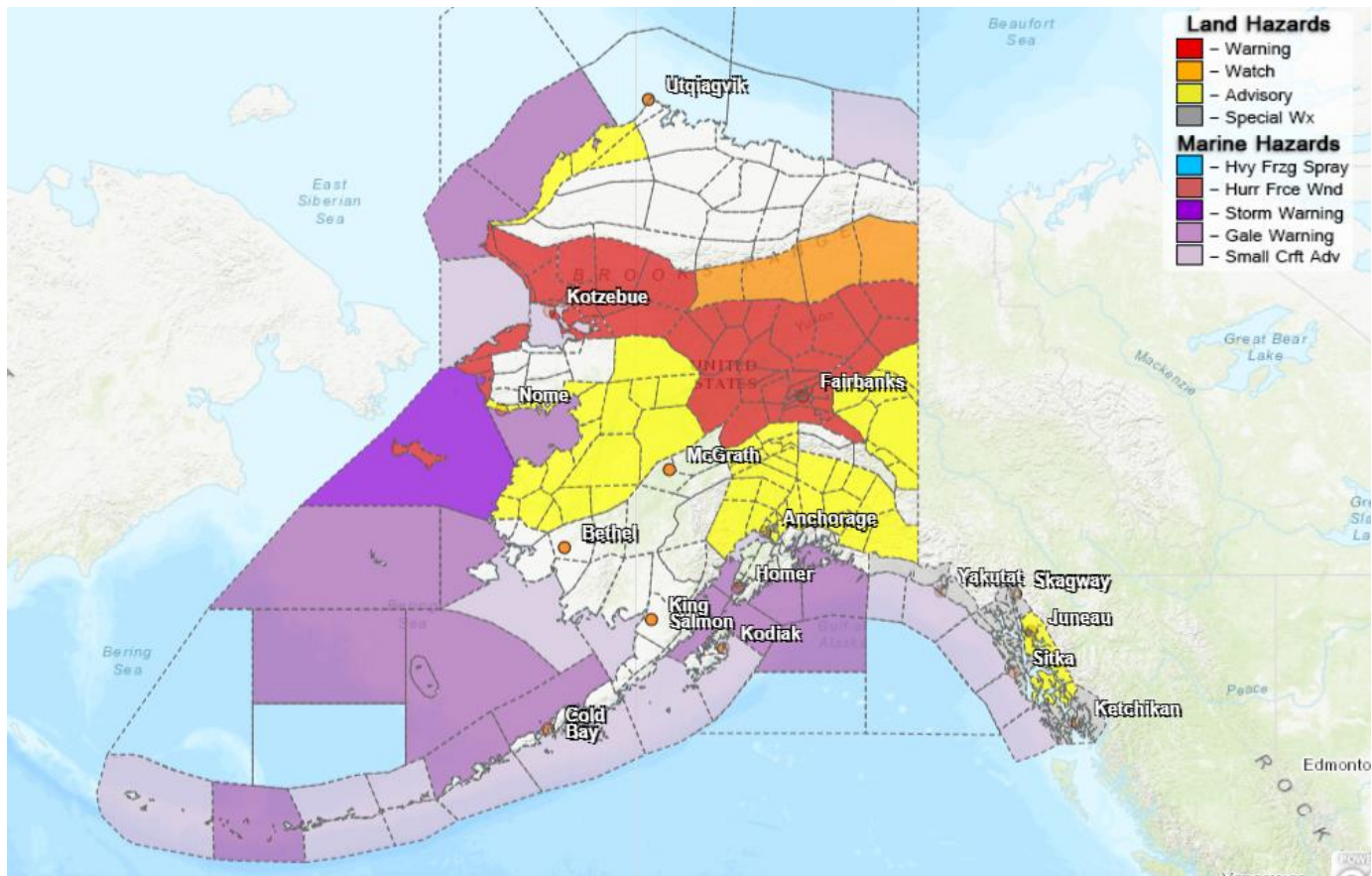
<http://dec.alaska.gov/spar/ppr/spill-information/response/>

## Alaska Cyber Security Information

State Employees may sign up for cyber security notifications and alerts at

<https://oit.alaska.gov/security>

## Significant Weather:



Blizzard Warnings are in effect for the following areas:

- St. Lawrence Island and the Bering Strait Coast until 6am Wednesday for snow accumulation of 4 to 6 inches.

Winter Storm Warnings are in effect for the following areas:

- Chukchi Sea Coast 3pm Wednesday for heavy snow and blowing snow. Total snow accumulation of 4 to 7 inches is expected.
- Lower Kobuk and Noatak Valleys until 3pm Wednesday for heavy snow accumulation of 7 inches.
- Baldwin Peninsula and Selawik Valley until 3pm Wednesday for heavy snow and blowing snow with gusting winds up to 45mph. Total snow accumulation of 5 to 7 inches expected.
- Upper Koyukuk Valley until 6pm Wednesday for heavy snow accumulation of 8-12 inches.
- Central Interior until midnight Wednesday for heavy snow along with freezing rain. Total snow accumulation of 8 to 12 inches along with freezing rain is expected from Nenana south.
- Deltana and Tanana Flats until 3am Thursday for heavy snow accumulation of 8 inches.
- Yukon Flats until 6am Thursday for heavy snow accumulation and blowing snow with gusts up to 50mph. Total snow accumulations of 6 to 12 inches...

Winter Storm Watches are in effect for the following areas:

- Southeastern Brooks Range along the Dalton Highway through Wednesday afternoon for heavy snow accumulation of 8 inches.

Winter Weather Advisories are in effect for the following areas:

- Southern Seward Peninsula and Coast until 6am Wednesday. Snow and freezing rain with total snow accumulation of 3 to 5 inches expected.
- Eastern Norton Sound and Nulato Hills until 6am Wednesday for snow and freezing rain with total snow accumulation of 4 to 6 inches expected.
- Western Arctic Coast until 6am Wednesday for cold wind chills and blowing snow with low visibility expected.
- Juneau, Wrangell, and Petersburg and surrounding areas until 6pm Wednesday for snow accumulation of 4 to 6 inches.
- Susitna Valley until midnight tonight and Anchorage and Matanuska Valley until 4am Wednesday for freezing rain and snow expected. Total ice accumulation up to two tenths of an inch and snow accumulation up to 2 inches.
- Copper River Basin until 4am Wednesday for snow accumulation of 4 to 8 inches expected.
- A Winter Weather Advisory is in effect until 3am Thursday for the Central Interior, Denali, the Middle and upper Tanana Valley, Yukon Flats, Yukon Delta, Yukon Valley, Lower Koyukuk and the Deltana and Tanana Flats. Snow is expected in lower elevations of 1 to 3 inches.

Special Weather Statements are in effect for the following areas:

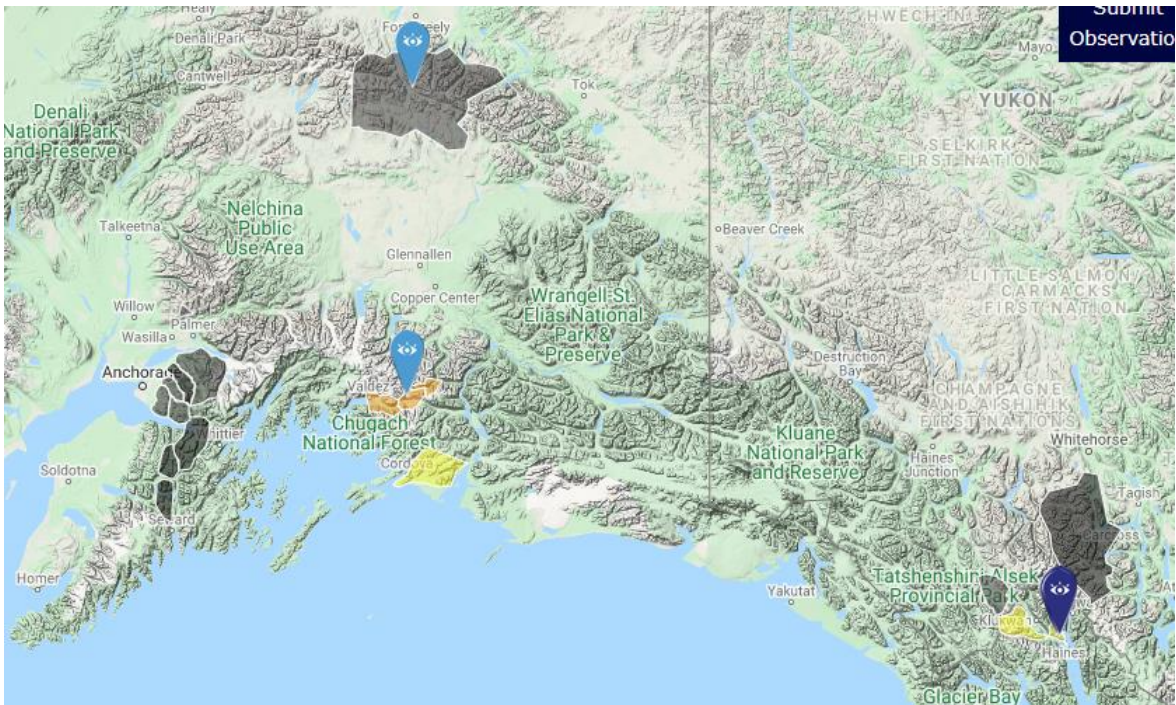
- Inner Channels near Juneau and Northern Admiralty Islands for Wednesday and Friday for 3 to 6 inches of snow on Wednesday. With a stronger system expected to move in on Friday that may produce 6 to 12 inches of snow for coastal and southern locations along the panhandle.

For more information and the most current weather, Watches / Warnings / Advisories go to:

<http://www.weather.gov/arh>



## Avalanche Forecast:



There are areas near Valdez, the Richardson Highway and Haines with Considerable risk.

There are areas near Cordova with Moderate Risk.

Check the Avalanche Forecast Center closest to your area for the most up to date information on avalanche potential. <https://alaskasnow.org> or <https://www.weather.gov/afc/avalancheweather>

**The Next Situation Report:** will be **29** December 2021. A significant change in the situation or the threat level will prompt an interim report.

This report is posted on the internet at <https://ready.alaska.gov/sitrep>. To register for email distribution, go to <http://list.state.ak.us/mailman/listinfo/dhsem.situation.report>. Direct questions regarding this report to the SEOC at 907-428-7100 or [seoc@alaska.gov](mailto:seoc@alaska.gov)